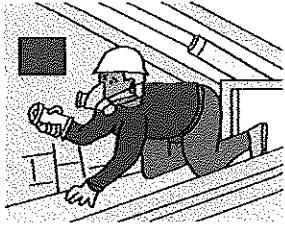


Lesson Plan

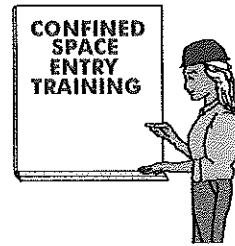
Course Title: Confined Space
Time: Approximately 45 minutes
Objective: To inform employees of the requirements under OSHA Standard CFR 1910.146 Permit-Required Confined Spaces

Teaching Aids Required: -Overhead Projector
 -Pointer
 -List of all confined spaces.
 -Examples of permit and non-permit confined spaces.
 -Certification copies for each successful student who completes the training.

Slide #	Information	Time Per Area
1	Confined Space	1:00
2	Introduction to Confined Spaces What is a Confined Space? Why is it important? My Background	3:00
3	Permit or Non Permit Confined Space What is a Permit Required Confined Space? What is a Non-Permit Required Confined Space? What is the difference and why is it important?	3:00
4	OSHA Standard CFR 1910.146 What are the Permit Required Confined Spaces Standard requirements? What should employees be informed of ? What does employee training include?	5:00
5	Who is covered by this section? Why is my work covered under this section? What is the worst that could happen if I ignore this? Where are the Confined Spaces here at work?	5:00
6	When do I need training? I get trained once and that is it, right? I don't have to do anything except listen, right? What is my employer responsible for?	3:00
7	Discussion Please share experiences you have had in this area. Give two examples of where you witnessed actions that put employees at risk. Why is this more than just another Government rule? Who is responsible for carrying out the confined space program?	7:00
8	Start videotape "Confined Space"	19:00

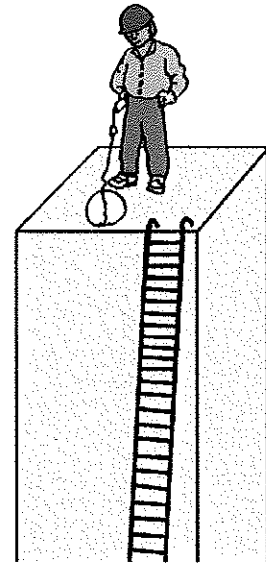


Confined Space



Introduction to Confined Spaces

- What is a Confined Space?
- Why is it important?
- My Background



What is a Confined Space? A confined space is a space that:

- Is large enough and so configured that an employee can bodily enter and perform assigned work; and
- Has limited or restricted means for entry or exit (some examples include: tanks, vessels, silos, storage bins, hoppers, vaults and pits); and
- Is not designed for continuous employee occupancy.

Why is it important

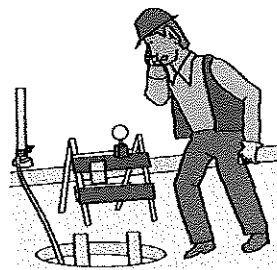
- For personal safety.
- For protection of possible rescuers.

My Background

- How long I have worked here
- My role and responsibilities
- How this standard impacts my job
- Personal reasons why this is important

Permit or Non Permit Confined Space

- What is a Permit Required Confined Space?
- What is a Non-Permit Required Confined Space?
- What is the difference and why is it important?



What is a Permit Required Confined Space? A confined space that has one or more of the following characteristics:

- Contains or has the potential to contain a hazardous atmosphere;
- Contains a material that has the potential for engulfing an entrant;
- Has an internal configuration such that an entrant could be trapped or asphyxiated; (ex: inwardly converging walls or by a floor which slopes downward and tapers to a smaller cross-section.
- Contains any other recognized serious safety or health hazard.

What is a Non-Permit Required Confined Space?

- A confined space that does not contain or, with respect to atmospheric hazards, have the potential to contain any hazard capable of causing death or serious physical harm.

What is the difference and why is it important?

- The difference is in the degree of hazards in the environment, permit required confined spaces have the potential of causing death or serious physical harm based upon the breathable air (or lack of breathable air) in the confined space.

OSHA Standard CFR 1910.146

- What are the Permit Required Confined Spaces Standard requirements?
- What should employees be informed of ?
- What does employee training include?



What are the Permit Required Confined Space Standard requirements?

-The requirements are to:

- Create a Permit Required Confined Space Program
- Identify all Permit Required Confined Spaces
- Train all affected employees

What should employees be informed of?

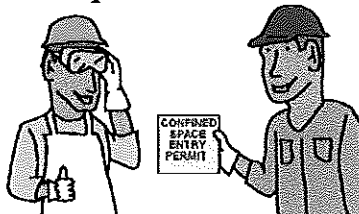
- Which confined spaces are permit required confined spaces.
- The hazards of the confined spaces.
- The proper procedures to use in order to complete work in these areas in a safe manner.

What does employee training include? Three areas are included:

- Requirements for understanding, knowledge, and skills necessary for the safe performance of duties under these conditions.
- When the training is to be provided:
 - *before being assigned duties in confined spaces
 - *before an assigned change in duties
 - *Whenever there is a change in permit space operations.
 - *Whenever there are perceived deviations in procedures or there is a perceived lack of information.
- Establishment of employee proficiency in this area.

Who is covered by this section?

- Why is my work covered under this section?
- What is the worst that could happen if I ignore this?
- Where are the Confined Spaces here at work?



Why is my work covered under this section?

-Discuss several individual cases with employees and explain why those areas are considered confined spaces.

What is the worst that could happen if I ignore this?

-A mild case scenario is that you get injured and trapped.

-A more realistic scenario is that you get hurt and cause the injury of a coworker.

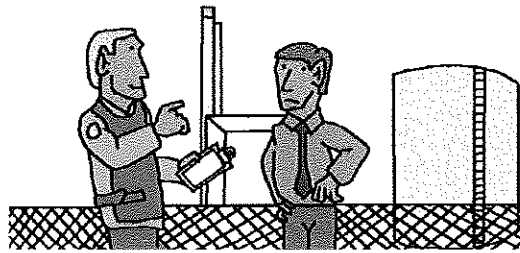
-Unfortunately a very common scenario is that you go into a permit required confined space you have been in a million times before and are overcome by an atmospheric hazard that results in your death, a coworker finds you and rushes in to save you and also dies. --This could be the end of it or we could have several more people that care about you give up their lives trying to rescue your already dead body. -- Don't be responsible for the death of your friends and coworkers, take the extra two minutes to do it right.

Where are the Confined Spaces here at work?

-Discuss the locations of the confined spaces on site and why they are permit or non-permit required confined spaces.

When do I need training?

- I get trained once and that is it, right?
- I don't have to do anything except listen, right?
- What is my employer responsible for?



I get trained once and that is it, right?

-No, you get trained any time that there is a change in either the confined spaces involved or your required duties. If these changes have any impact on your safety in the confined space.

I don't have to do anything except listen, right?

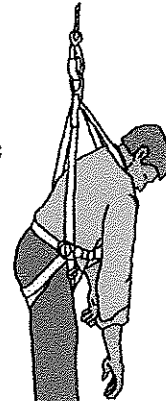
-Listen carefully and **perform well**. One of the requirements is that each employee acquire the understanding, knowledge, and **skills** necessary for the safe performance of duties. Skills need to be demonstrated, so be prepared to "show what you know".

What is my employer responsible for?

-Your employer is responsible to see that the required training is accomplished. It is also required that each of you is certified by your employer to do confined space work.

Discussion

- Please share experiences you have had in this area.
- Give two examples of where you witnessed actions that put employees at risk.
- Why is this more than just another Government rule?
- Who is responsible for carrying out the confined space program?



Please share experiences you have had in this area.

- close calls
- mishaps at other facilities
- news reports

Give two examples of where you witnessed actions that put employees at risk.

- just going in there for a second
- disregard for danger of a confined space
- Surprises encountered while in a confined space

Why is this more than just another Government rule?

- what makes this important
- what can happen if disregarded
- why is it just good business sense

Who is responsible for a safe working environment?

- each person at this facility
- we are all responsible